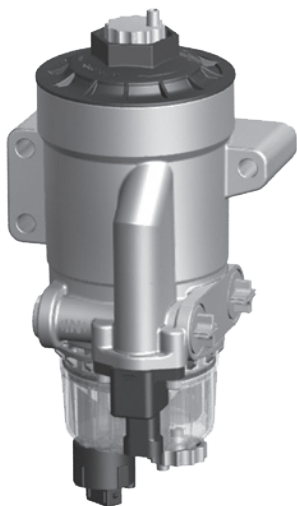


On-Board Diesel Fuel Coalescing Filter | Manual Drain

*Coalescing Elements Patent Pending

HDP-BC

Model No. of filter in photograph is:
HDP KF1 340 BC1 XX W 1.1 /-AS1-H2

Application Introduction:**The Reason for Better Engine Filtration**

Mobile machines and commercial vehicles are subject to the toughest working conditions. To ensure smooth running of vehicles, and to protect both the engine and the drive system from damage, optimum diesel fuel conditioning is particularly important. Filtroil's Fuel Filtration On-Board Diesel Coalescing filter offers a modern cartridge filter system design available in two versions, protects vehicle operators from failures, breakdowns and expensive service interventions

Features and Benefits

- Manual water drain
- Optional fuel pre-heater and water sensor
- Small envelope size offers greater flexibility in mounting locations
- Low investment cost due the economical design
- Long service life of the element yields low operating costs
- Seamless installation due to our plug and play approach
- Easy adaption to the on-board power supply
- Unsurpassed water removal for ULSD

**INDUSTRIAL****MOBILE
VEHICLES****MARINE****AGRICULTURE****BULK FUEL
FILTRATION****Applications**

Flow Rating: 90-160 gph (340-600 lph)

Operating Pressure: <14.5 psi, (<1 bar) suction side application

Temperature Range: -40°F to 194°F (-40°C to 90°C)

Nominal Voltage: 24V DC (optional 12V DC) when heater or water sensor are used

Rated Power Fuel Preheating: 300W

Weight of HDP-BC: 5.1 lbs (2.3 kg)

Water Separation Efficiency: >95% to ISO CD 16332

Connection Size: M22 x 1.5 - 340 Size

M27 x 2.0 - 600 Size

**Filter
Housing
Specifications**

90-160 gph
340-600 lph

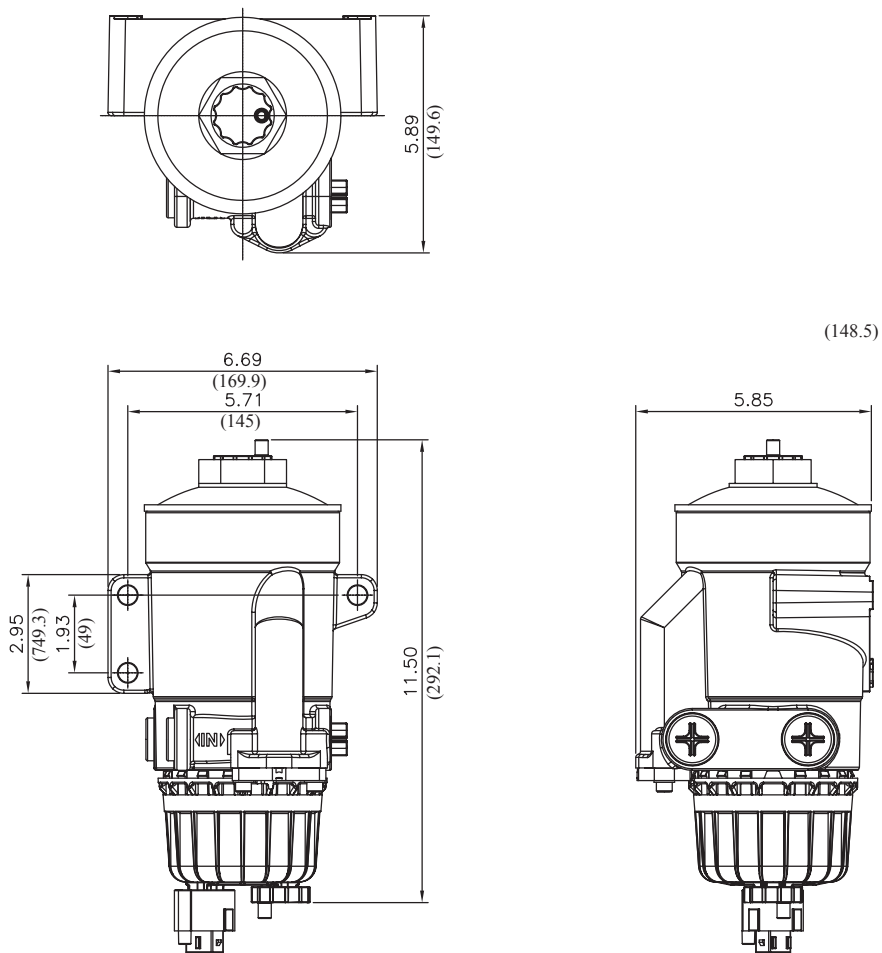
14.5 psi
1 bar

Suction Side Application

On-Board Diesel Fuel Coalescing Filter | Manual Drain



HDP-BC



Metric dimensions in ().

Element
Particulate
Performance
Information

Particulate Element	Filtration Ratio Per ISO 19438	Dirt Retention Per ISO 19438
	n > 10 µm (c)	to DP
10 µm	> 99%	300 mbar m > 42g

Element
Water
Coalescing
Performance
Information

Coalescing Element	Suction Side Coalescing Per ISO CD 16332	
	Max Flow	Single Pass Water Removal Efficiency
10 µm	158 gal/h	> 95%

Flow Direction: Outside In
Element Nominal Dimensions: 3.8" (95.6 mm) O.D. x 7.0" (177.2 mm) long - 340 Size
3.8" (95.6 mm) O.D. x 9.4" (238.2 mm) long - 600 Size

Note:
Based on Diesel
Fuel Type A, Water
Concentration:
1500 ppm



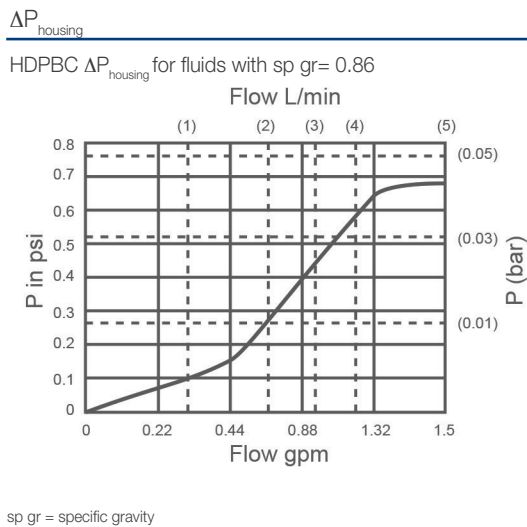
On-Board Diesel Fuel Coalescing Filter | Manual Drain

HDP-BC

Fuel Oils

- ULSD15 and similar petroleum diesels
- Biodiesel blends
- Synthetic diesel and blends

Fluid Compatibility



Notes

Pressure Drop Information

Based on Flow Rate and Viscosity

Size	Evolution Stage	Filtration Rating	Filter Material
0340	BC1	7 = 7 µm	KF1
0600		10 = 10 µm	
		30 = 30 µm	

Replacement Elements

For connector types, contact factory

On-Board Diesel Fuel Coalescing Filter | Manual Drain



HDP-BC

Filter Model Number Selection

How to Build a Valid Model Number for a Filtroil HDP-BC Housing Supplied with Element:

BOX 1	BOX 2	BOX 3	BOX 4	BOX 5	BOX 6	BOX 7	BOX 8	BOX 9
HDP								

Example: NOTE: Only box 9 may contain more than one option

BOX 1	BOX 2	BOX 3	BOX 4	BOX 5	BOX 6	BOX 7	BOX 8	BOX 9
HDP	KF1	340	BC1	10	W	1	X	AS1

=HPDKF1340BC110W
1XAS1

BOX 1	BOX 2	BOX 3	BOX 4	BOX 5
Filter Series	Filter Material	Size	Evolution Stage	Filtration Rating
HDP	KF1 = Dieselmicon®	340 = 90 gph 600 = 160 gph	BC1	7 = 7 µm 10 = 10 µm 30 = 30 µm

BOX 6	BOX 7	BOX 8	BOX 9
Type of Clogging Indicator	Type Code	Modification Number	Options
W = No clogging indicator	1 = 24 VDC <small>*for 12 VDC, contact factory</small>	X	AS1 = w/ integrated water sensor H1 = w/ integrated fuel pre-heating PH3 = Large hand priming pump Omit = None

NOTES:

Box 9. The hand priming pump is only available on the 600 size HDP-BC.



Filtroil, LLC - Headquarters
2600 E. Cary Street, Suite 5102
Richmond, Virginia 23223

TEL: 800.638.3866
TEL: 804.359.9125
EMAIL: filtroil@filtroil.com