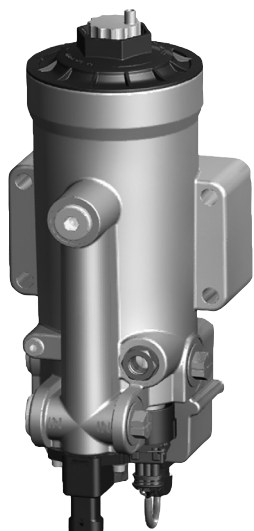


On-Board Diesel Fuel Coalescing Filter | Automatic Drain

*Coalescing Elements Patent Pending

HDP-HTModel No. of filter in photograph is:
HDP-HT**Application Introduction:**

The Reason for Better Engine Fuel Filtration

Mobile machines and commercial vehicles are subject to the toughest working conditions. To ensure running vehicles, and to protect both the engine and the whole drive system from damage, optimum diesel fuel conditioning is particularly important. Filtroil's On-Board Diesel Coalescing filter offers a modern cartridge filter system design available in two versions, protects a vehicle from failures, breakdowns and expensive service interventions.

Features and Benefits

- Automatic water drain
- Optional fuel pre-heater and water sensor
- Small envelope size offers greater flexibility in mounting locations
- Low investment cost due the economical design
- Long service life of the element yields low operating costs
- Seamless installation due to the plug and play approach
- Easy adaption to the on-board power supply
- Unsurpassed water removal for ULSD

**INDUSTRIAL****MOBILE
VEHICLES****MARINE****AGRICULTURE****BULK FUEL
FILTRATION****160 gph
600 lph****14.5 psi
1 bar**

Suction Side Application

Applications**Filter
Housing
Specifications**

Flow Rating: 160 gph (600 lph)

Operating Pressure: 14.5 psi, (<1 bar) suction side application

Temperature Range: -4°F to 194°F (-20°C to 90°C)

Nominal Voltage: 24V DC (optional 12V DC)

Rated Power Fuel Preheating: 300W

Weight of HDP-HT: 9.5 lbs (4.25 kg)

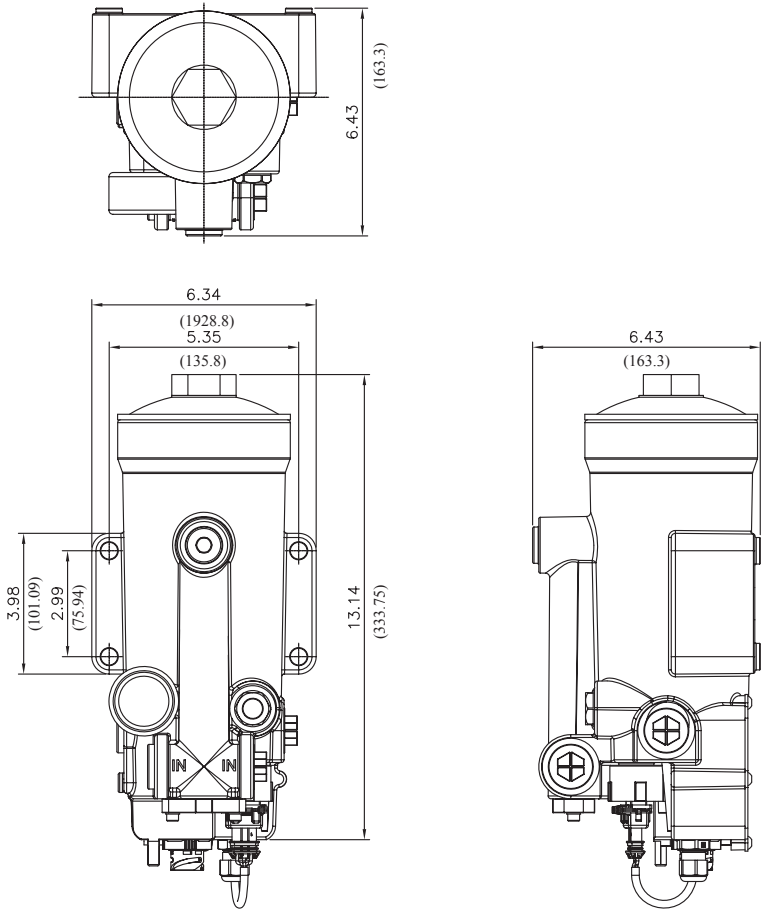
Water Separation Efficiency: >95% to ISO CD 16332

Connection Size: G ¾" Inlet/Outlet (Other options available annual order in quantities over 500 pieces)

On-Board Diesel Fuel Coalescing Filter | Automatic Drain



HDP-HT



Metric dimensions in (). Installation instructions included on element

Element
Particulate
Performance
Information

Particulate Element	Filtration Ratio Per ISO 19438	Dirt Retention Per ISO 19438
	n > 10 µm (c)	to DP
10 µm	> 99%	300 mbar m > 42g

Element
Water
Coalescing
Performance
Information

Coalescing Element	Suction Side Coalescing Per ISO CD 16332	
	Max Flow	Single Pass Water Removal Efficiency
10 µm	158 gal/h	> 95%

Flow Direction: Outside In
Element Nominal Dimensions: 4.0" (102.2 mm) O.D. x 8.7" (220 mm) long

Note:
Based on Diesel
Fuel Type A, Water
Concentration:
1500 ppm

On-Board Diesel Fuel Coalescing Filter | Automatic Drain



HDP-HT

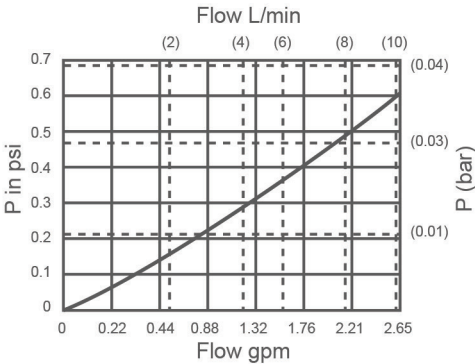
Fuel Oils

- ULSD15 and similar petroleum diesels
- Biodiesel blends
- Synthetic diesel and blends

Fluid Compatibility

$\Delta P_{\text{housing}}$

HDPHT $\Delta P_{\text{housing}}$ for fluids with sp gr= 0.86



sp gr = specific gravity

Notes

Pressure Drop Information

Based on Flow Rate and Viscosity

Size	Evolution Stage	Filtration Rating	Filter Material
0600	HT1	7 = 7 µm	KF1
		10 = 10 µm	
		30 = 30 µm	

Replacement Elements

On-Board Diesel Fuel Coalescing Filter | Automatic Drain



HDP-HT

Filter
Model
Number
Selection

How to Build a Valid Model Number for a Filtroil HDP-HT Housing Supplied with Element:

BOX 1	BOX 2	BOX 3	BOX 4	BOX 5	BOX 6	BOX 7	BOX 8	BOX 9
HDP								

Example: NOTE: Only box 9 may contain more than one option

BOX 1	BOX 2	BOX 3	BOX 4	BOX 5	BOX 6	BOX 7	BOX 8	BOX 9
HDP	KF1	600	GT1	10	A	1	X	AS1

=HPDKF1600HT110A
1XAS1K6

BOX 1	BOX 2	BOX 3	BOX 4	BOX 5
Filter Series	Filter Material	Size	Evolution Stage	Filtration Rating
HDP	KF1 = Dieselmicon®	600 = 160 gph	HT1	7 = 7 µm 10 = 10 µm 30 = 30 µm

BOX 6	BOX 7	BOX 8	BOX 9
Type of Clogging Indicator	Type Code	Modification Number	Options
A - Steel Blanking Plug UED - Vacuum Gauge	1 = 24 VDC *for 12VDC, contact factory	X	*AS1 - w/ integrated water sensor H1 - w/ integrated fuel pre-heating

*Note: Standard Option



Filtroil, LLC - Headquarters
2600 E. Cary Street, Suite 5102
Richmond, Virginia 23223

TEL: 800.638.3866
TEL: 804.359.9125
EMAIL: filtroil@filtroil.com